



REGENT  
ESTATES

# GREENE WALK, BERKHAMSTED

£695,000 Freehold

---

## ACCOMMODATION

SOLD OFF MARKET! A three bedroom 1930's semi in a sought after cul-de-sac, perfect to remodel or extend.

ENTRANCE HALL \* LIVING ROOM \* KITCHEN \* MASTER BEDROOM WITH EN SUITE SHOWER ROOM \* THREE FURTHER BEDROOMS \* FAMILY BATHROOM \* REAR GARDEN \* GARAGE/WORKSHOP & DRIVEWAY PARKING \* CUL-DE-SAC LOCATION

Located in a sought after cul-de-sac just off Swing Gate Lane and only a short walk from the town centre, this attractive three bedroom home offers excellent accommodation.

Boasting generous living space the property offers a rare opportunity to create a perfect family home to ones own specification.

On the ground floor there is an entrance hall, a good size living room running from front to back, and a kitchen. Upstairs, on the first floor, there are three bedrooms and family bathroom.

Outside there are mature front and rear gardens. The garage/workshop is longer than usual and a driveway provides further parking.

## LOCATION

## OUTSIDE

## IMPORTANT NOTICE

1. These sales particulars have been prepared from information supplied by the vendors and information collated by Regent Estates.
2. Confirmation has been sought from the vendors to confirm these particulars accuracy.
3. All measurements given have a tolerance of 3" in accordance with RICS Code of Measuring Practice.
4. None of these appliances, plumbing or electrics mentioned within these particulars have been tested by ourselves, prospective purchasers are urged to check their condition before entering in to purchase.

## VIEWING

Strictly by appointment through Regent Estates.

01442 877878  
141-143 High Street, Berkhamsted, Herts,  
HP4 3HH

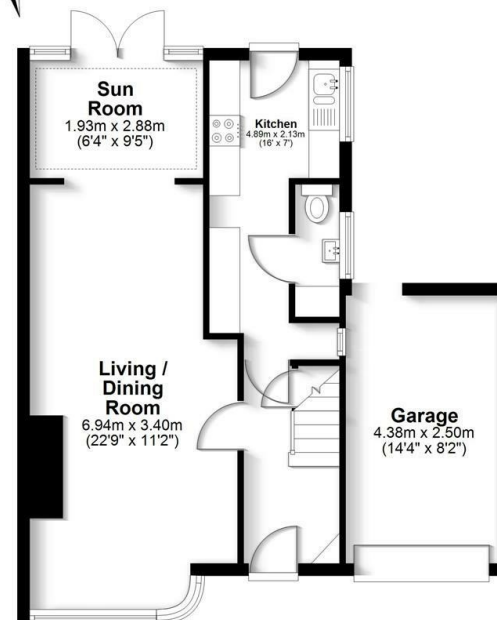
Email: [info@regent-estates.com](mailto:info@regent-estates.com)  
[www.regent-estates.com](http://www.regent-estates.com)



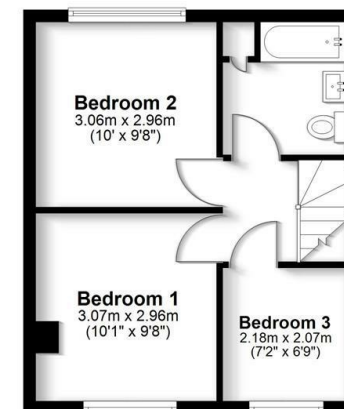




**Ground Floor**  
Approx. 55.2 sq. metres (594.3 sq. feet)



**First Floor**  
Approx. 32.0 sq. metres (343.9 sq. feet)



Total area: approx. 87.2 sq. metres (938.2 sq. feet)

FOR ILLUSTRATIVE PURPOSES ONLY - NOT TO SCALE  
The position and size of doors, windows, appliances and other features are approximate only. Total area includes garages and outbuildings - © My Home Property Marketing - Unauthorised reproduction prohibited.  
Plan produced using PlanUp.

**REGENT  
ESTATES**

TELEPHONE: 01442 877878  
141-143 High Street, Berkhamsted,  
Herts, HP4 3HH  
Email: info@regent-estates.com  
www.regent-estates.com